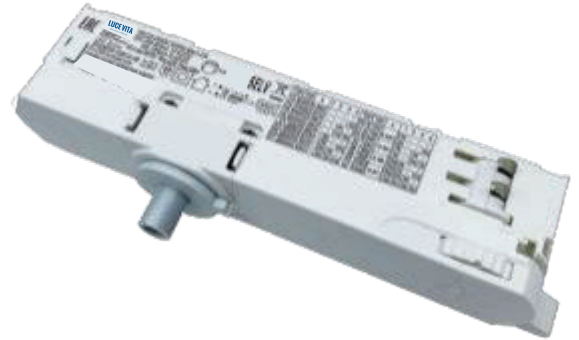


LV 30/220-240/700 TA LG - 4 M

Generals Benefits

- Better Reliability & Efficiency
- 3 phase, 4 wires system
- Casing available in black, white & grey
- Flicker Free
- Output Current Selection with DIP Switch
- Lifetime 50,000 Hrs
- 3 Years warranty



Application

Track Light

Approvals



Lucevita LED Power supply are with high reliability in compact housing having best surge protection, THD, Ripple Current in the industry.

Drivers generally used in track light application luminaires for residential, retail and Office space lighting.

LG Series - Track Adapter

Product Specification Sheet

www.lucevita.in

LV 30/220-240/700 TA LG - 4 M

Parameters

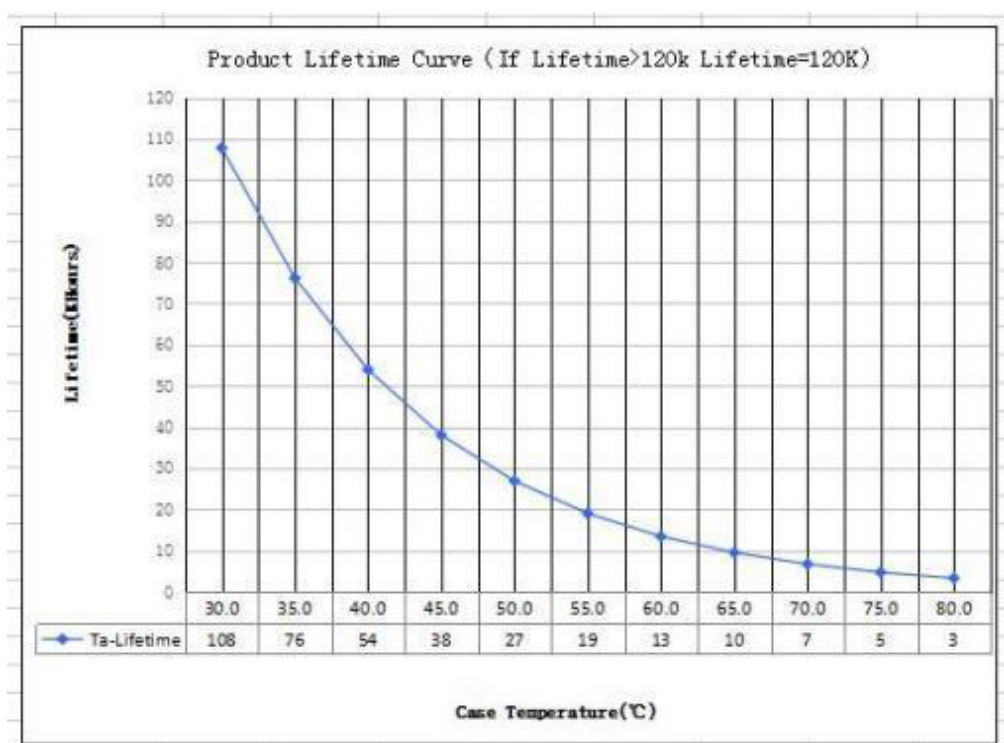
Category	Item	Technical Norm
Features	Output Type	Constant Current
	IP Grade	IP20
	Insulation Class	Class II
Input	Rated Input Voltage	220-240VAC
	Range of Input Voltage	176-264VAC or 176-280VDC
	Frequency	50/60Hz
	Input Current	≤0.17A
	Input Power	≤33W
	Power Factor	≥0.95 (230VAC, full load)
	THD	≤20% (230VAC, full load)
	No-load Power Consumption	≤0.5W @230VAC
Output	Output Voltage Range	10-40VDC
	No Load Voltage	59VDC Max.
	Output Current	350/400/450/500/550/600/650/700mA
	Max. Output Power	29.4W
	Efficiency	≥89% (230VAC, full load)
	Current Ripple	±5% (Imax-Imin)/(Imax+Imin)
	Current Accuracy	±5%
	Started Delay Time	≤0.5S (230VAC, full load)
	PSTLM	≤1
Protection	SVM	≤0.4
	Short Circuit Protection	Auto Recovery
	Overload Protection	Auto Recovery
	No-load Protection	Auto Recovery
	Insulation voltage	3000V 5mA 60S between P-S
	Insulation resistance	>100M ohm @ 500VDC
Environment	Leakage current	< 250μA, I/P to O/P or I/P to PE @230V input
	Ta/Operation Temperature	-20...+35° C
	Ts/Storage Temperature	-40....+75 °C
	Tc/Enclosure Temperature	70 °C
	Humidity	10%....90%RH
	Atmosphere	86-108KPa
Construction	Connection Method	Push-in Terminal
	Installation	Build-in & Independent
	PRI Wire preparation	PVC, VDE certificated, 0.5- 1.5mm ² , with 8mm tin
	SEC Wire preparation	PVC, VDE certificated, 0.5- 1.5mm ² , with 8mm tin
Standards	Dimension	158 x 31 x 45mm (L*W*H)
	Certification	ENEC/CE/ SAA
	Safety Standards	EN61347- 1:2015,EN61347-2- 13:2014/A1:2017, EN62384:2006/A1:2009,AS61347.2. 13:2018, AS/NZS 61347. 1:2016 Inc A1
	EMC Standards	EN IEC 55015:2019,EN IEC 55015:2019/A11:2019, EN IEC 61000-3-2:2019, EN 61000-3-3:2013/A1:2019
		EN61547:2009
	Performance	EN 62384
	Surge	L-N/2KV
	RoHS	Complied to 2011/65/EU
Others	Life Time	50000h Tc=85 °C
	Warranty	3 years , F.R. <10%
	Noise	≤ 24dB @Background noise ≤ 18dB , Interval≥ 15cm

LV 30/220-240/700 TA LG - 4 M

Output Current Setting

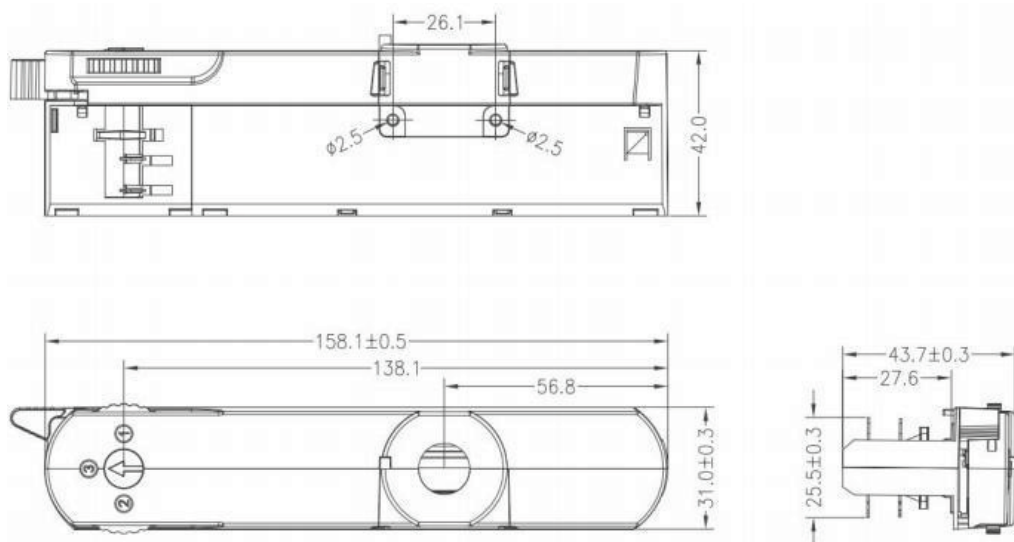
Ouput Current	1	2	3
350mA	-	-	-
400mA	-	-	ON
450mA	-	ON	-
500mA	-	ON	ON
550mA	ON	-	-
600mA	ON	-	ON
650mA	ON	ON	-
700mA	ON	ON	ON

Lifetime curve

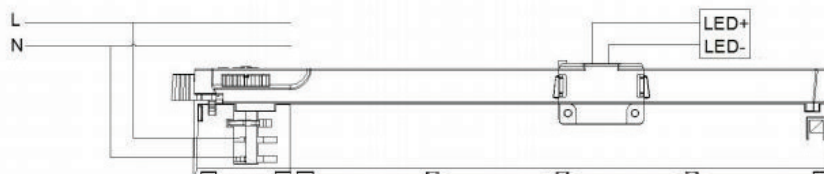


LV 30/220-240/700 TA LG - 4 M

Dimension



Wiring Diagram



Phase Track Light Rail Specification

Wiring instructions

- All connections must be kept as short as possible to ensure good EMI behaviour
- Mains leads should be kept apart from LED Driver and other leads (ideally 5 – 10 cm distance)
- Advice the maximum length of output wires is 3 m
- Secondary switching is not permitted (Except for constant voltage)
- Incorrect wiring can damage LED modules.
- The wiring must be protected against short circuits to earth (sharp edged metals parts, metal cable clips, louver, etc.)

Remarks

1. All Parameters, if not specified, are measured at 230VAC/50Hz and 25°C ambient temperature.
2. LED Driver is a component of the luminaires, Luminaires and wire layout will affect the EMC, please check the EMC with end products again.
3. Warranty Mentioned is a limited warranty only to the original purchaser or to the first user @ Tc max from the date of manufacturing when properly installed and operated under normal conditions of use.
4. Please refer our website for details warranty conditions.
5. For further details, kindly refer our website. www.lucevita.in, or email info@lucevita.in.