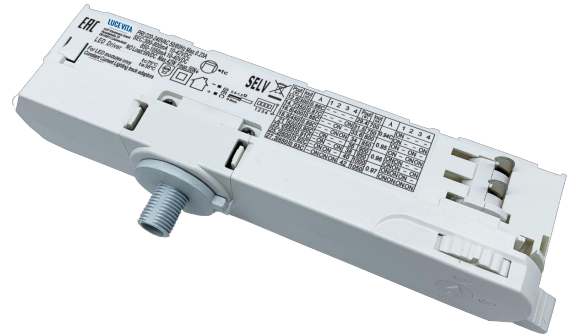


## LV 42/220-240/1050 TA LG - 4 M

### Generals Benefits

- Better Reliability & Efficiency
- 3 phase, 4 wires system
- Casing available in black, white & grey
- Flicker Free
- Output Current Selection with DIP Switch
- Lifetime 50,000 Hrs
- 3 Years warranty



### Application

Track Light

### Approvals



Lucevita LED Power supply are with high reliability in compact housing having best surge protection, THD, Ripple Current in the industry.

Drivers generally used in track light application luminaires for residential, retail and Office space lighting.

## LV 42/220-240/1050 TA LG - 4 M

### Parameters

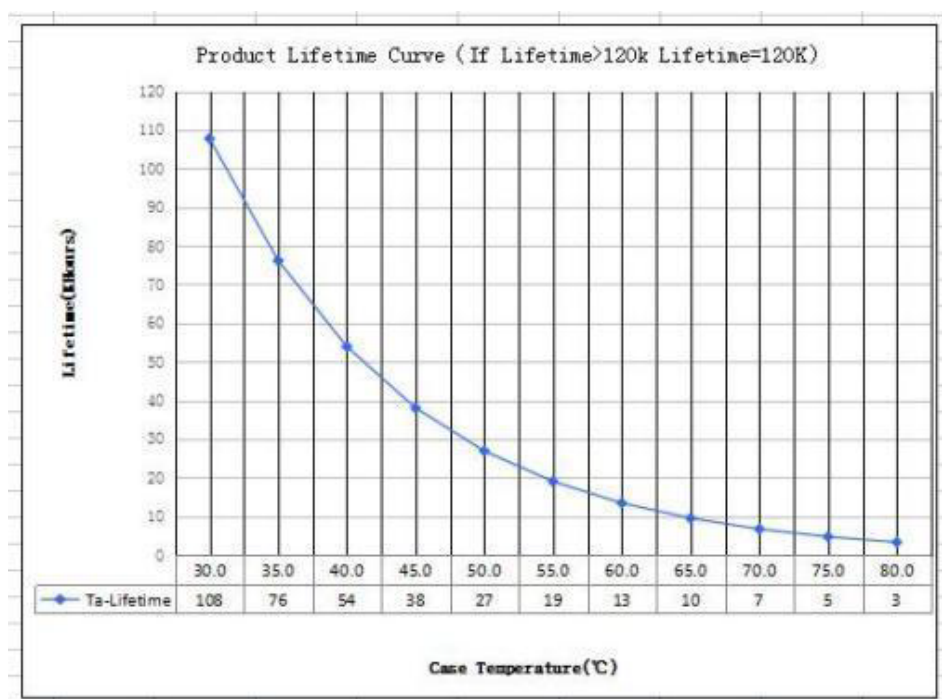
Category	Item	Technical Norm
Features	Output Type	Constant Current
	Output Features	Isolation
	IP Grade	IP20
Input	Insulation Class	Class II
	Rated Input Voltage	220-240VAC
	Range of Input Voltage	176-264VAC or 176-280VDC
	Frequency	50/60Hz
	Input Current	≤0.23A (230VAC , full load)
	Input Power	≤47.2W (230VAC , full load)
	Power Factor	≥0.97 (230VAC , full load)
Output	THD	≤20% (230VAC, full load)
	No-load Power Consumption	≤0.5W @230VAC
	Output Voltage Range	10-40VDC@800- 1050mA
	No Load Voltage	59VDC Max.
	Output Current	800mA - 1050mA ( Max . output)
	Max. Output Power	42W
	Efficiency	≥89% (230VAC, full load)
	Current Ripple	±5% (Imax-Imin)/(Imax+Imin)
	Current Accuracy	±5%
	Started Delay Time	≤0.5S (230VAC, full load)
Protection	PSTLM	≤1
	SVM	≤0.4
	Short Circuit Protection	Auto Recovery
	Overload Protection	Auto Recovery
	No-load Protection	Auto Recovery
	Insulation voltage	3000V 5mA 60S between P-S
Environment	Insulation resistance	>100M ohm @ 500VDC
	Leakage current	< 250μA, I/P to O/P or I/P to PE @230V input
	Ta/Operation Temperature	-20...+35° C
	Ts/Storage Temperature	-40....+75° C
	Tc/Enclosure Temperature	70° C
Construction	Humidity	10%....90%RH
	Atmospheric pressure	86-108KPa
	Connection Method	Push-in Terminal
	Installation	Build-in & Independent
	PRI Wire preparation	PVC, VDE certificated, 0.5- 1.5mm <sup>2</sup> , with 8mm tin
Standards	SEC Wire preparation	PVC, VDE certificated, 0.5- 1.5mm <sup>2</sup> , with 8mm tin
	Dimension	158 x 31 x 45mm (L*W*H)
	Certification	CE/ SAA
	Safety Standards	EN61347- 1:2015,EN61347-2- 13:2014/A1:2017, EN62384:2006/A1:2009 ,AS61347 .2. 13:2018 , AS/ NZS 61347. 1:2016 Inc A1
	EMC Standards	EN IEC 55015:2019,EN IEC 55015:2019/A11:2019, EN IEC 61000-3-2:2019 , EN 61000-3-3 :2013/A1:2019
		EN61547:2009
	Performance	EN 62384
Others	Surge	L-N/2KV
	RoHS	Complied to 2011/65/EU
	Life Time	50000h @Ta/ Tc
	Warranty	3 years , F.R. < 10000ppm
	Noise	≤ 24dB @ Background noise ≤ 18dB , Interval≥ 15cm

### LV 42/220-240/1050 TA LG - 4 M

#### Output Current Setting

Output Current	1	2	3	4
800mA	ON	-	ON	-
850mA	ON	-	ON	ON
900mA	ON	ON	-	-
950mA	ON	ON	-	ON
1000mA	ON	ON	ON	-
1050mA	ON	ON	ON	ON

#### Lifetime curve

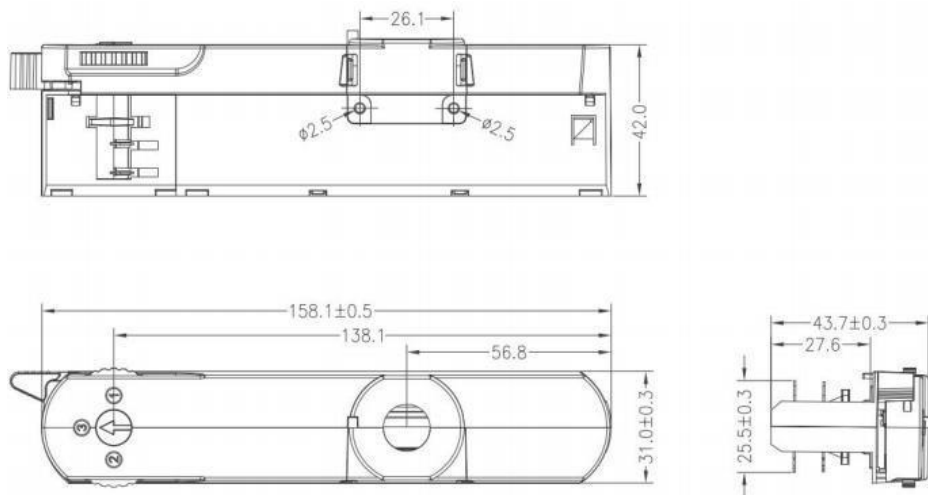


#### Packing Information

Packing Way	Model	Colour	Carton L*W*H(mm)	Pcs/ Carton	Net Weight/ Pcs (Kg)	Net Weight/ Carton (Kg)	Gross Weight/ Carton (Kg)
Industrial	LV 42/220-240/1050 TA LG - 4 M	White Black Grey	515*274*370	150	0.125	18.75	20.07

### LV 42/220-240/1050 TA LG - 4 M

#### Dimension



#### Wiring Diagram



#### Phase Track Light Rail Specification

#### Wiring instructions

- All connections must be kept as short as possible to ensure good EMI behaviour
- Mains leads should be kept apart from LED Driver and other leads (ideally 5 – 10 cm distance)
- Advice the maximum length of output wires is 3 m
- Secondary switching is not permitted (Except for constant voltage)
- Incorrect wiring can damage LED modules.
- The wiring must be protected against short circuits to earth (sharp edged metals parts, metal cable clips, louver, etc.)

#### Remarks

1. All Parameters, if not specified, are measured at 230VAC/50Hz and 25°C ambient temperature.
2. LED Driver is a component of the luminaires, Luminaires and wire layout will affect the EMC, please check the EMC with end products again.
3. Warranty Mentioned is a limited warranty only to the original purchaser or to the first user @ Tc max from the date of manufacturing when properly installed and operated under normal conditions of use.
4. Please refer our website for details warranty conditions.
5. For further details, kindly refer our website. [www.lucevita.in](http://www.lucevita.in), or email [info@lucevita.in](mailto:info@lucevita.in).