

LV 40/220-240/1000 R SG

General Benefits

- Round Design
- High Voltage withstanding capacity
- High Surge withstanding capacity
- Long Life & High Durability
- Automatic Restart after Safe Voltage Mode.
- 3 Years Warranty



Application

- Indoor Lighting
- Commercial Lighting

Approvals



Lucevita LED Power supply are with high reliability in compact housing having best surge protection, THD, Ripple Current in the industry.

Drivers are generally used in Indoor & Commercial lighting.

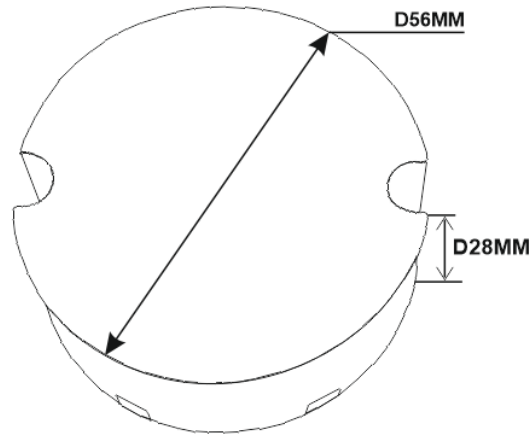
LV 40/220-240/1000 R SG

Parameters

Category	Item	Technical Norm
Features	Output Type	Constant Current
	Dimming Type	NA
	Insulation Class	CLASS-II
	IP Rating	IP 20
Input	Rated Input Voltage	240 VAC
	Operating Input Voltage	100-300 VAC
	Frequency	50-60 Hz
	Input Current	0.19A
	Input Power	45W
	Power Factor	>0.98
	THD	<10%
	In Rush Current Protection	YES
	Over Voltage Cutoff	320V (Tole : +/-10V)
	Under Voltage Cutoff	90V (Tole : +/-10V)
	Automatic Restart	300V (Tole : +/-10V)
Output	Output Current	1000mA (Tole+/-3%)
	Output Voltage	25-40V
	Output Power	40W
	Constant Current Accuracy	+/-3%
	Efficiency	>87%
	No Load Protection	YES
	Thermal Protection	YES
	Output short circuit protection and Restart	YES
Environment & Protection	Ambient Operating Temperature Range	-20 °C To +50 °C
	Maximum Starting Temperature	-30 °C To +75 °C
	Max Case Temperature	75°C
	Input Surge Protection	4KV
Construction	Input/Output Terminal	NA
	Input (Cable wire) 3core 1.0sq mm	300 mm
	Output (Cable) 2 core 1.0sq mm	300 mm
	Dimension	L - 56 mm Round, H - 28 mm, CTC - 50mm
Others	Life	30,000 Hrs

LV 40/220-240/1000 R SG

Pictorial Representation



Remarks

1. All Parameters, if not specified, are measured at 230VAC/50Hz and 25°C ambient temperature.
2. LED Driver is a component of the luminaires, Luminaires and wire layout will affect the EMC, please check the EMC with end products again.
3. Warranty Mentioned is a limited warranty only to the original purchaser or to the first user @ Tc max from the date of manufacturing when properly installed and operated under normal conditions of use.
4. Please refer our website for details warranty conditions.
5. For further details, kindly refer our website. www.lucevita.in, or email info@lucevita.in.